



Wolverine Resources Corp. ("Wolverine") is a junior exploration company focused on the exploration of mineral properties in Labrador, Canada. Wolverine currently holds interest in 3 early stage mineral properties in Labrador.

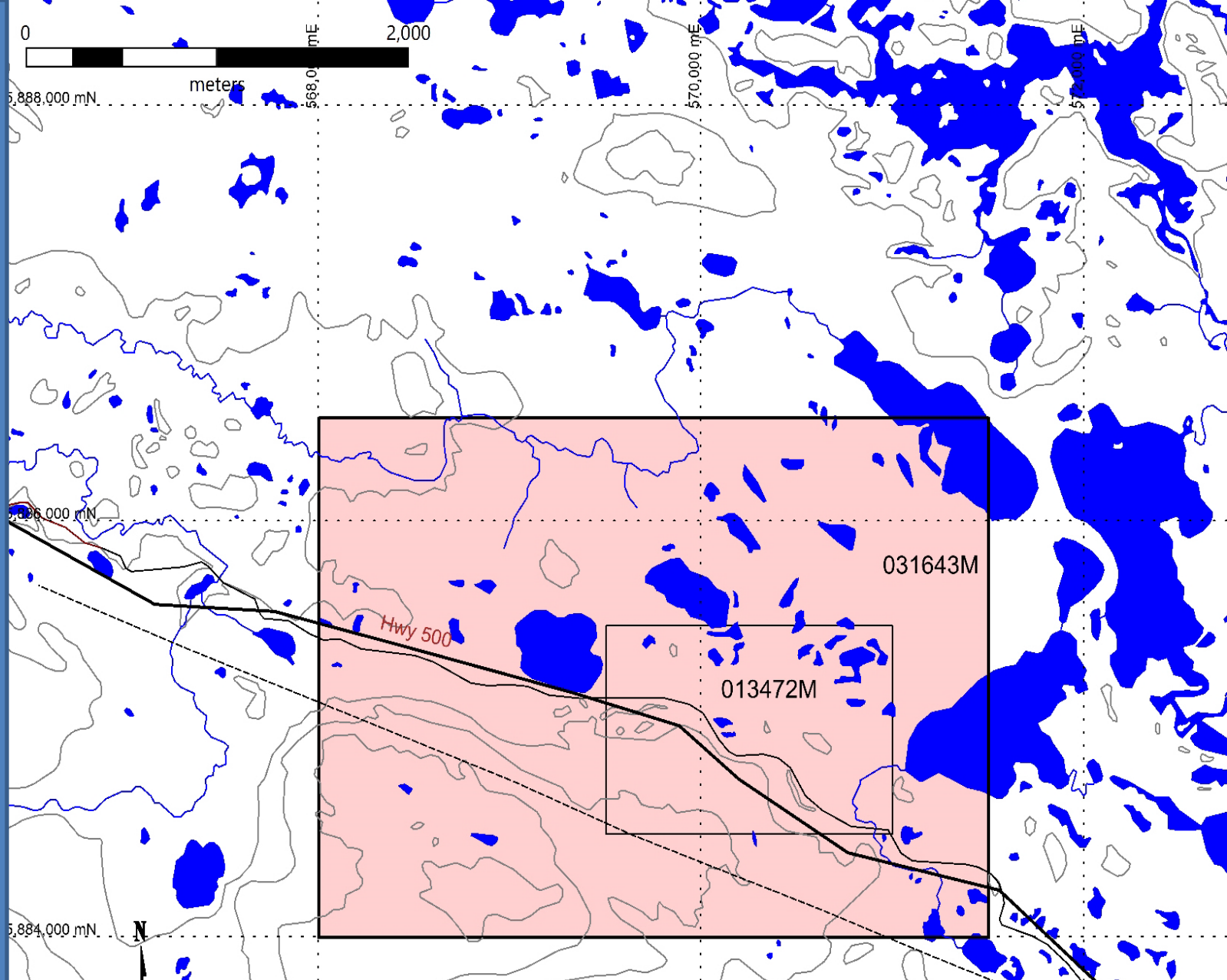


Cache River Property

Labrador – Property Location



Property Licences



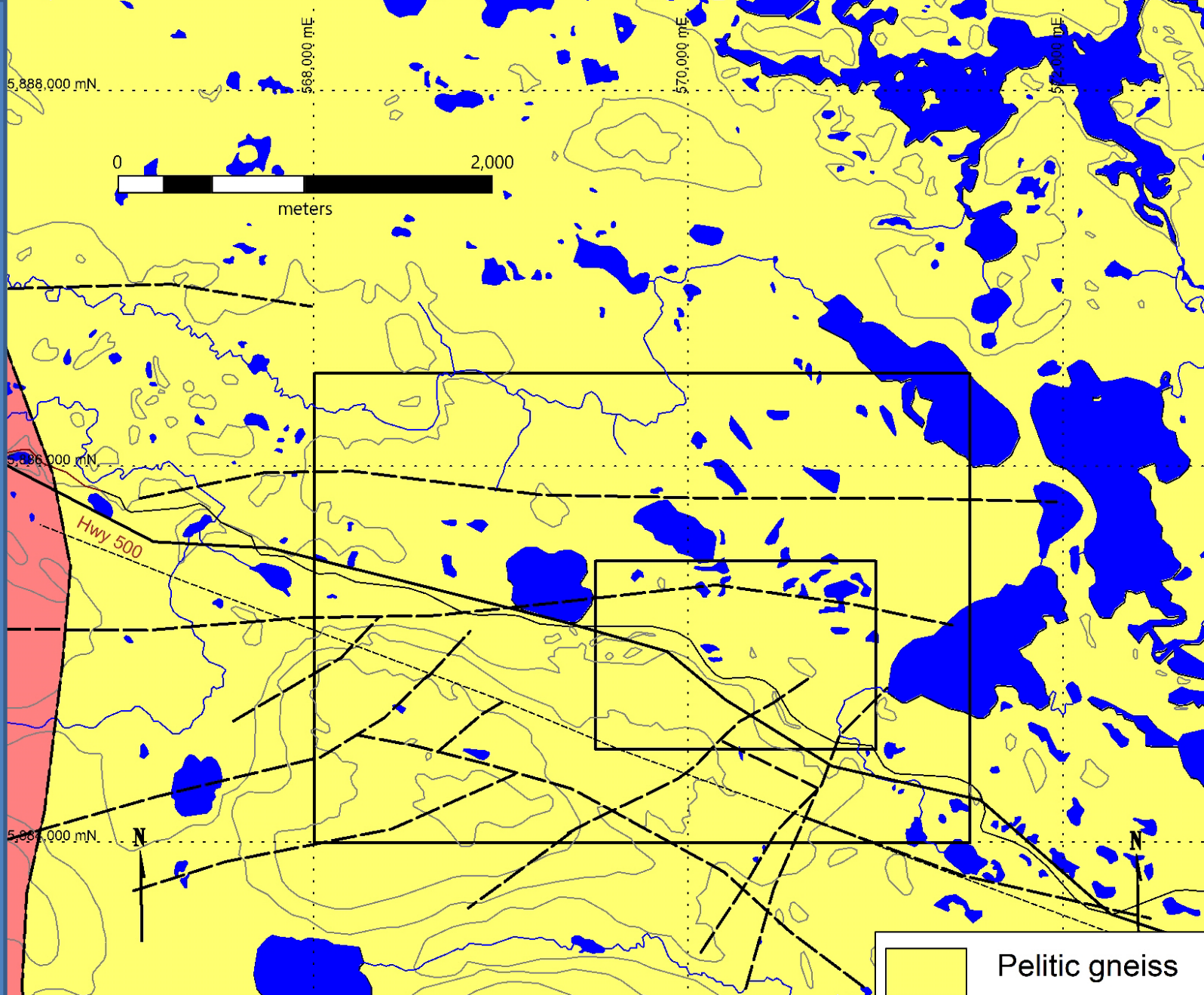
2 Licences (875 ha) – 90% Owned by Wolverine / 10% owned
by Rich Resources Inc. Road Accessible

Air Photo

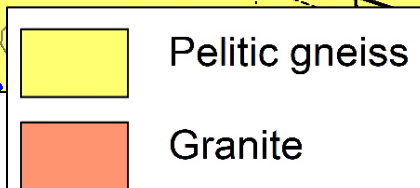


Glacial direction NW-SE. Generally flat topography.

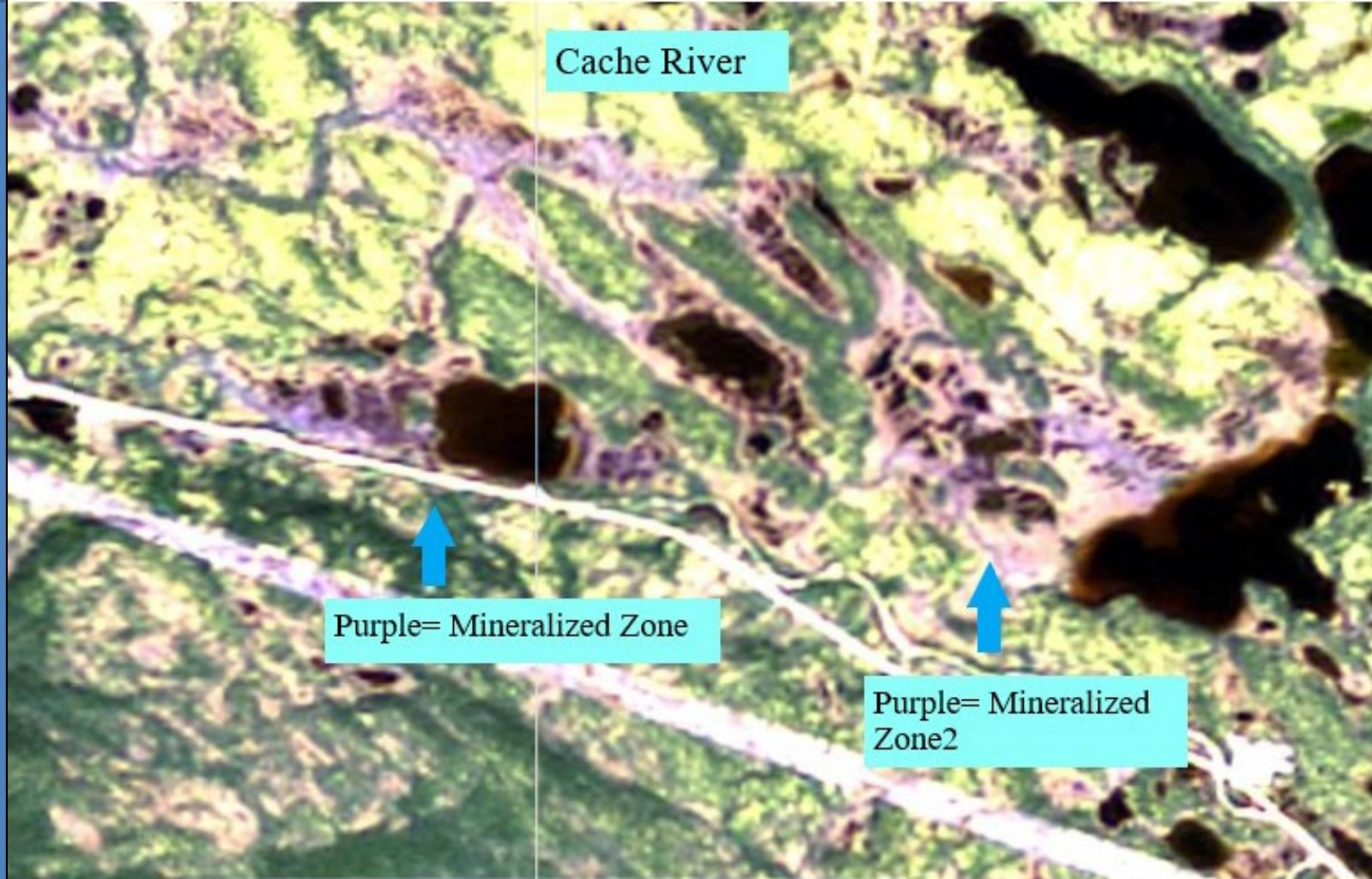
Geology



Grenville Province Pelitic Gneisses

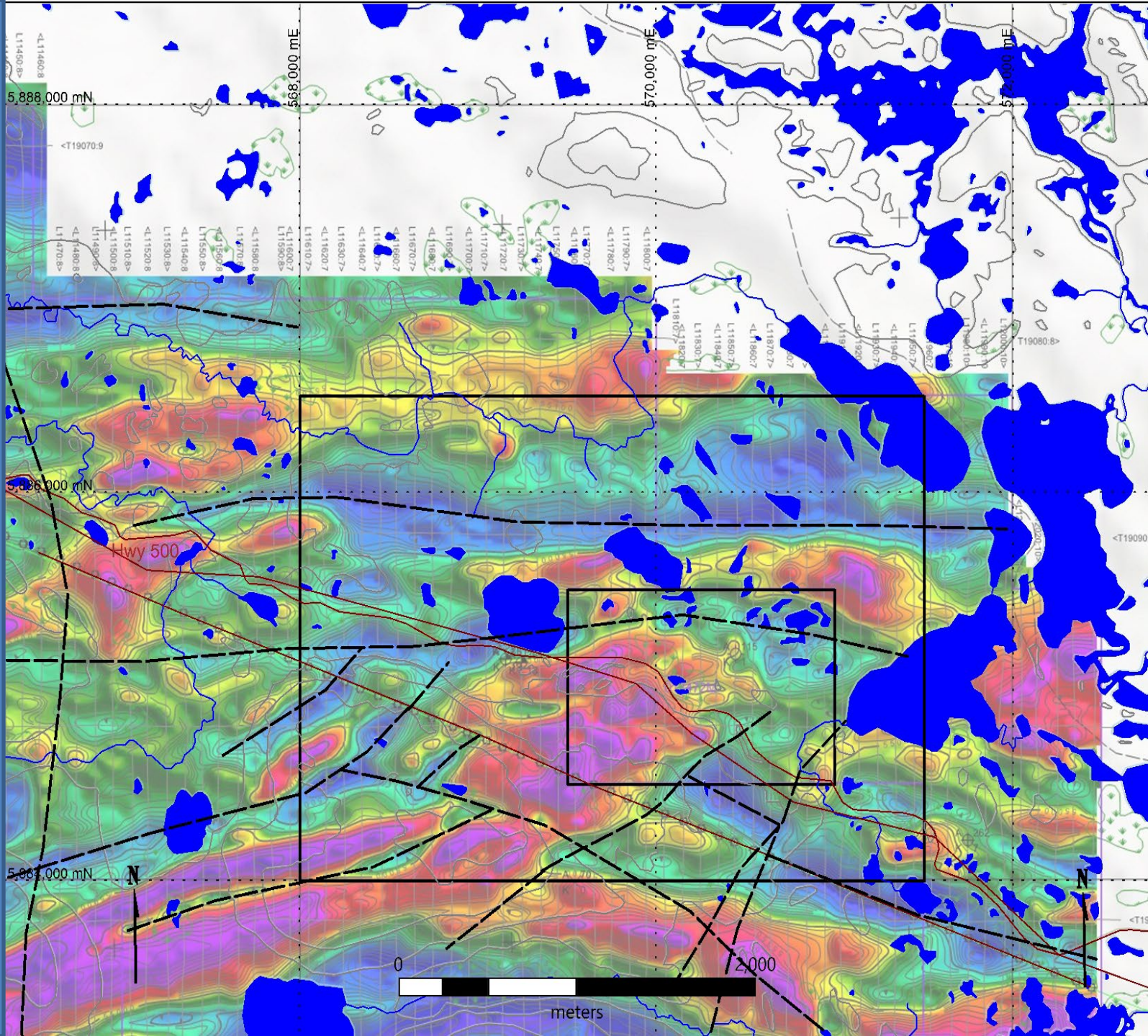


Landsat 8 Imagery



Property Encompasses Fe-rich surface exposures in multiple zones.

2007 Airborne Magnetics



Prospecting



Copper-gold showing



Coarse sulphides in gabbro

Prospecting



Mineralized samples from prospecting

Rock Geochemistry



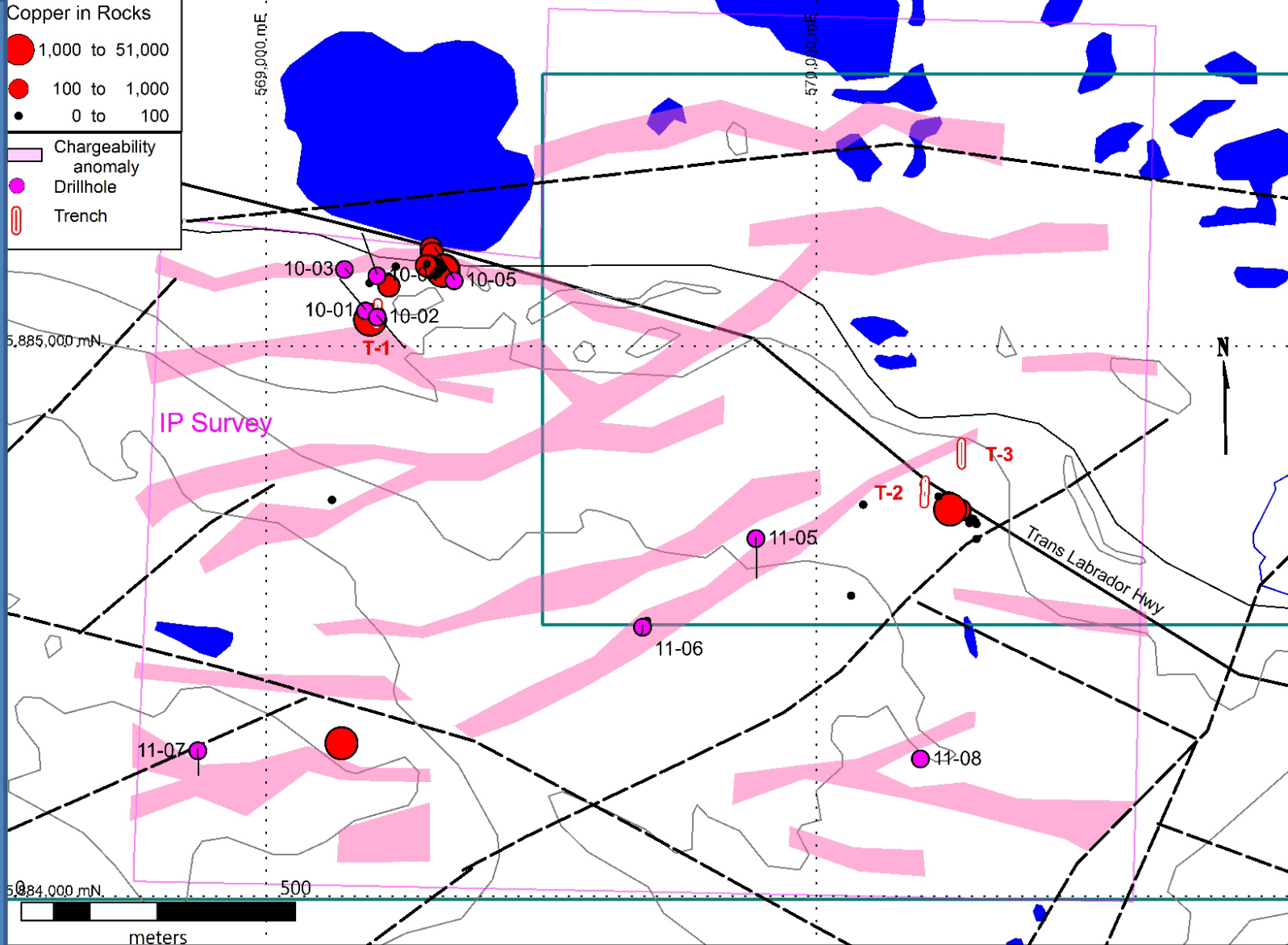
2010 Prospecting – 90 Rock Grab Samples and 3 Trenches.

14 Samples > 0.1% Cu.

Highest Grading sample – 5.1% Cu and 420 ppb Au.

Strongest mineralization associated with structurally controlled Gabbro dykes.

Exploration Compilation



Prospecting, trenching, IP, and diamond drilling completed.

Drilling



Hole	From (m)	To (m)	Interval (m)	ppm Cu	ppb Au
10-01	50.4	51.0	0.6	473	
10-01	53.6	54.0	0.4	1,058	
10-01	77.5	79.2	1.7	1,158	
10-02	28.1	29.9	1.8	223	
10-02	57.3	57.5	0.2	2,443	49
10-03	Abandoned				
10-04	4.5	10.0	5.5	592	
10-04	71.0	92.0	21.0	400	
10-05	Not sampled				
11-05	5.0	5.6	0.6	4,927	427
11-05	40.3	41.2	0.9	1,713	
11-06	No significant values				
11-07	No significant values				
11-08	21.5	22.5	1.0	1,700	10

9 Shallow Holes completed – 5 holes intersected Cu mineralization.

Numerous high priority targets untested.

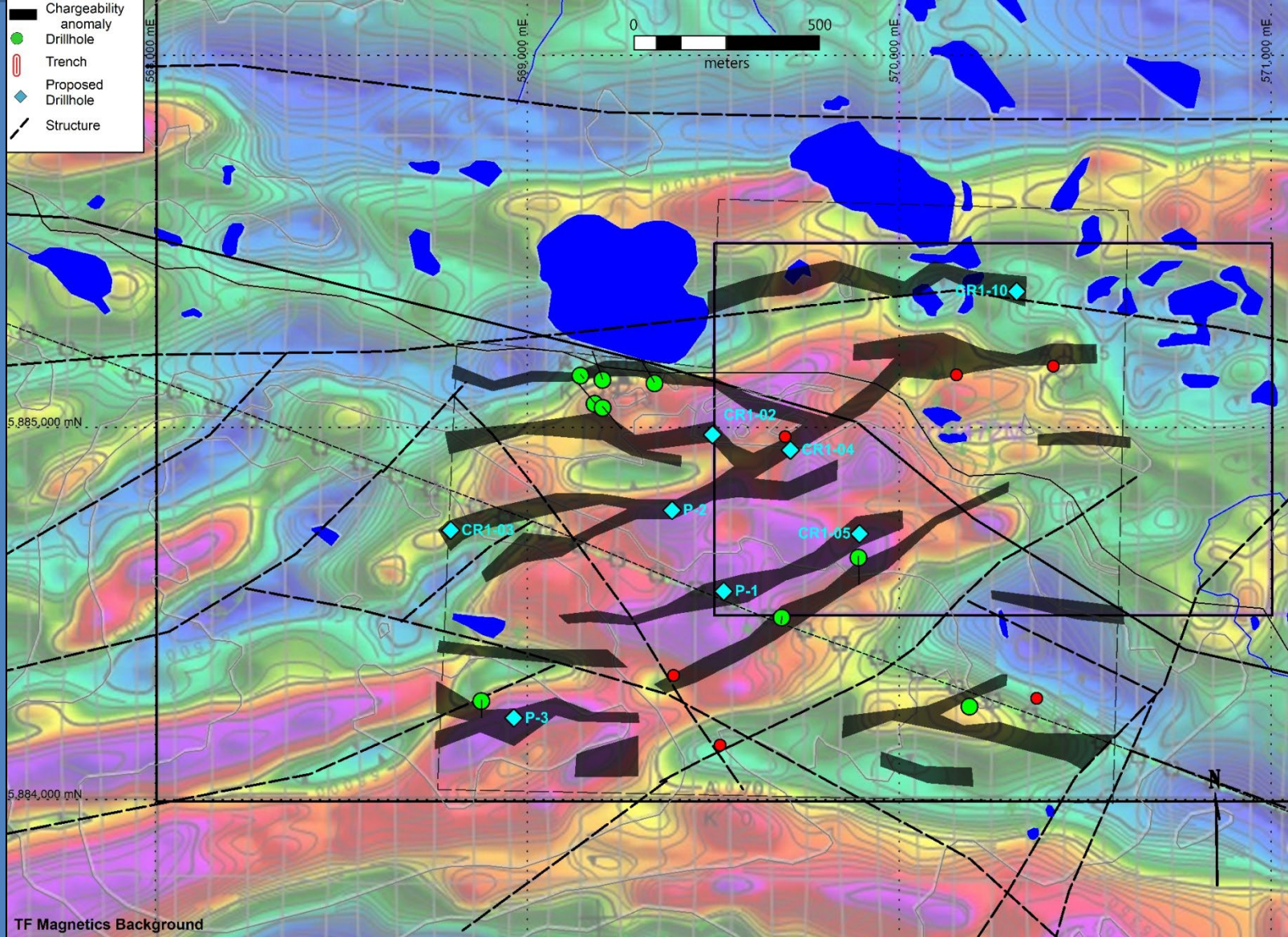
2025 Follow-up Plans

- Very little work done away from roadside exposures and only short holes tested near surface anomalies.
- Additional prospecting to the north and south of the highway along structural corridors may help delineate additional drill targets.
- An E-W trending coincident mag low - chargeability high zone extends across the property (200m N of 2010 drilling) should be prospected.
- 8 untested targets (5 derived from IP) to be drilled.

Budget

Program	Description	Cost
Drilling	600m (8 holes)	\$240,000
Prospecting	2 men x 10 days	\$6,000
Analytical	160 samples	\$8,000
Camp	2 months	\$20,000
Contingencies	~ 10%	\$26,000
Total		\$300,000

2025 Drill Targets



Compilation Map Showing Drill Targets