



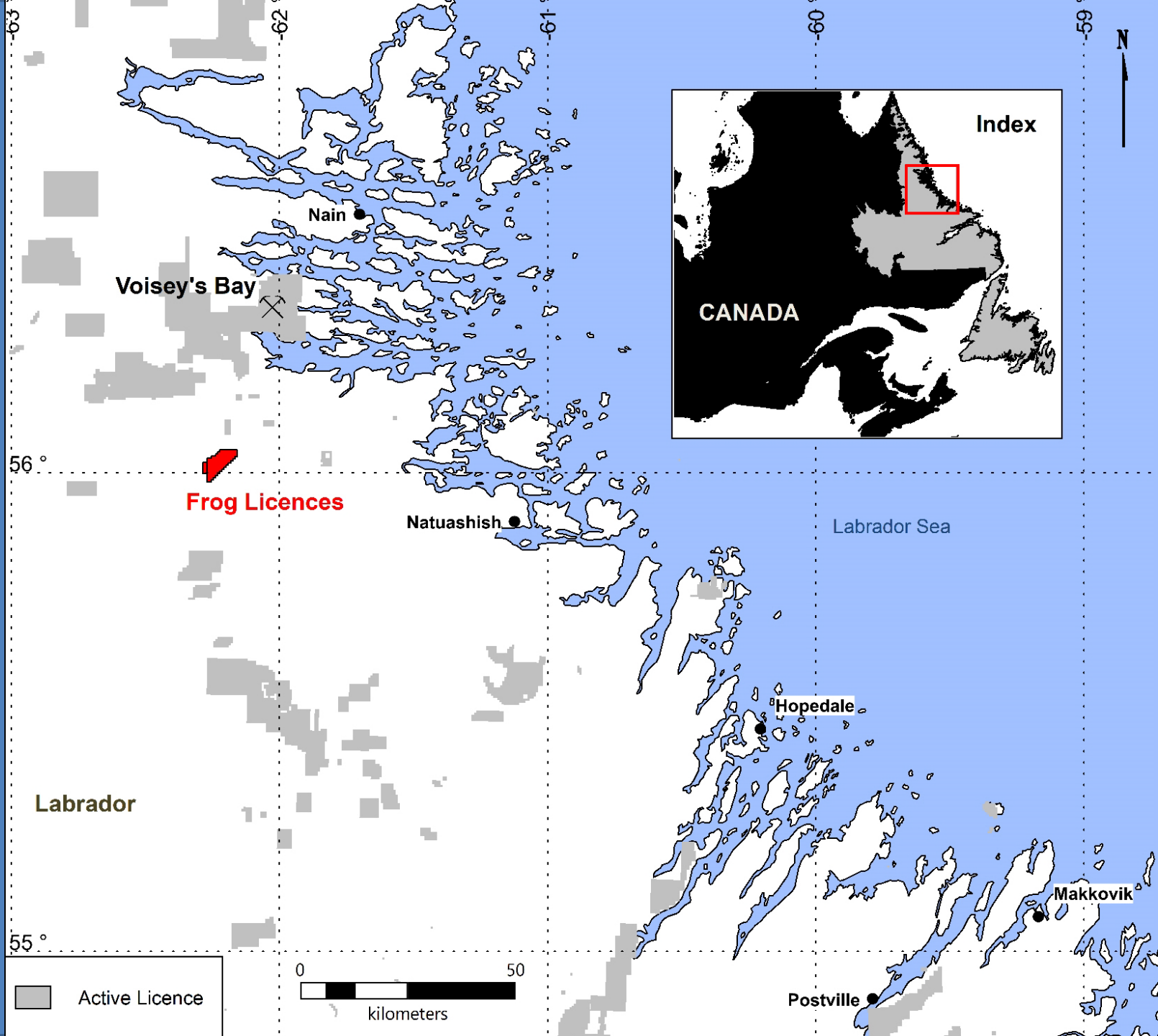
**WOLVERINE**  
RESOURCES CORP.  
OTCPK: WOLV

**Wolverine Resources Corp. ("Wolverine") is a junior exploration company focused on the exploration of mineral properties in Labrador, Canada. Wolverine currently holds interest in 3 early stage mineral properties in Labrador.**

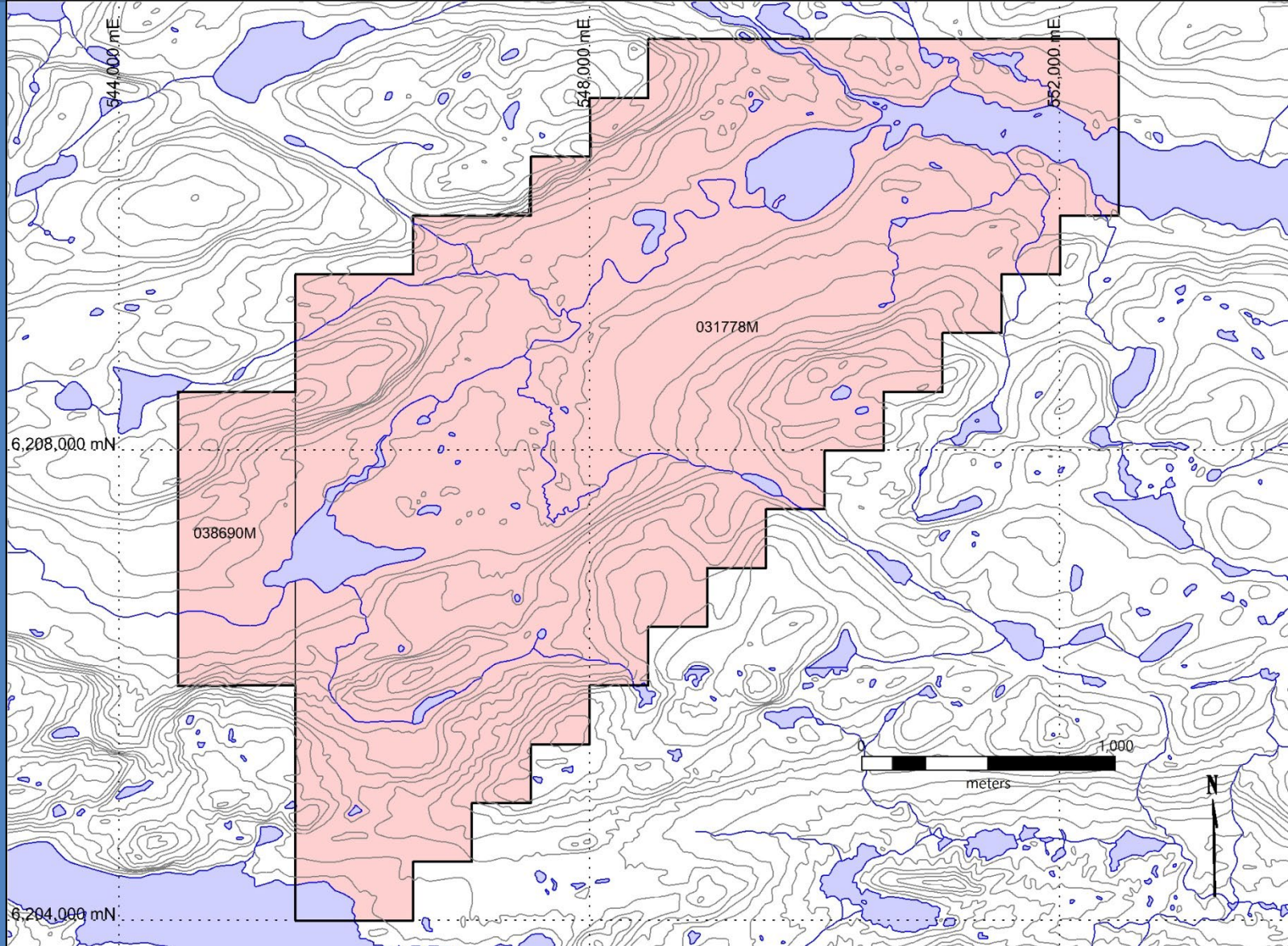


Frog Property

# Labrador – Property Location



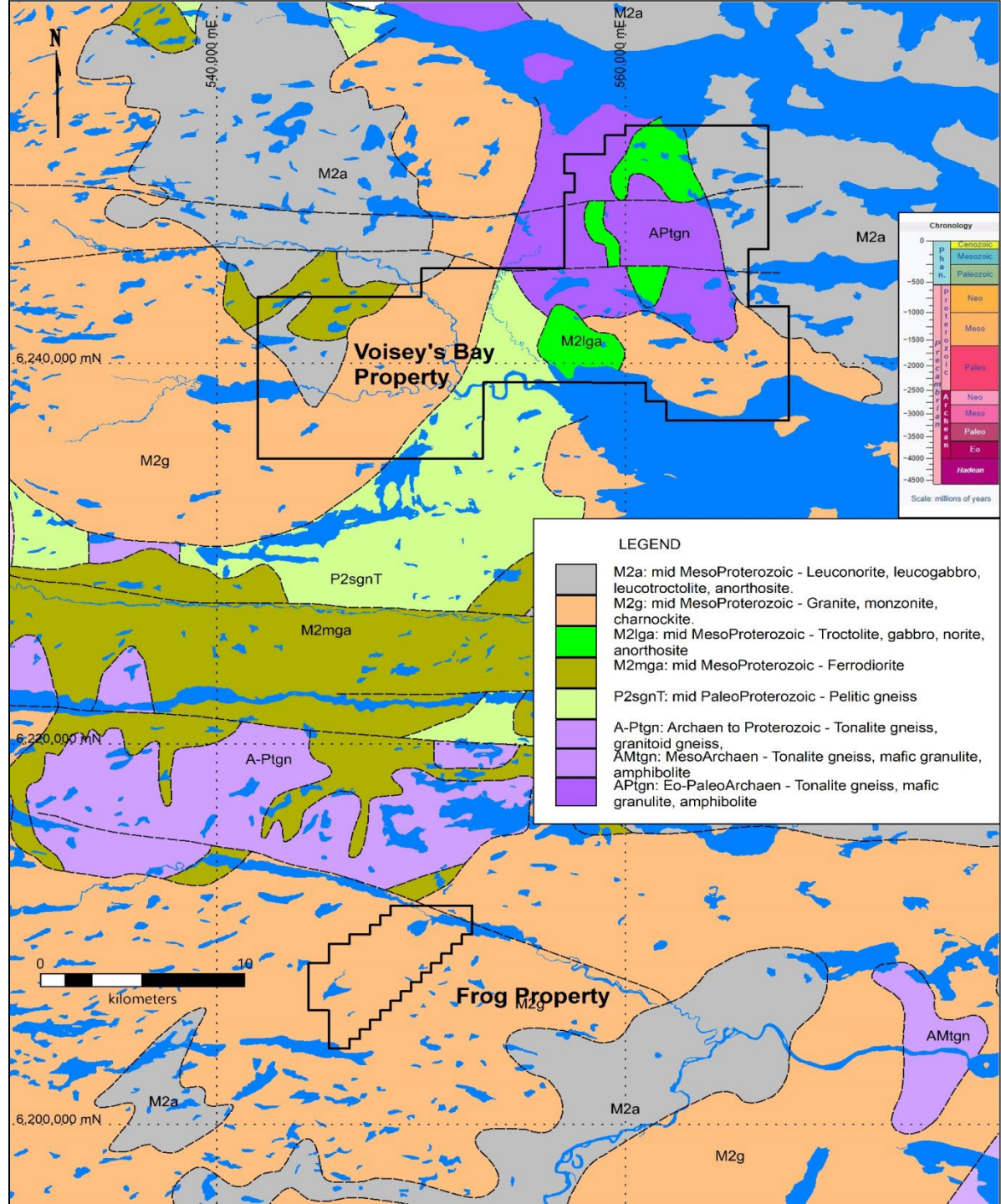
# Property Licences



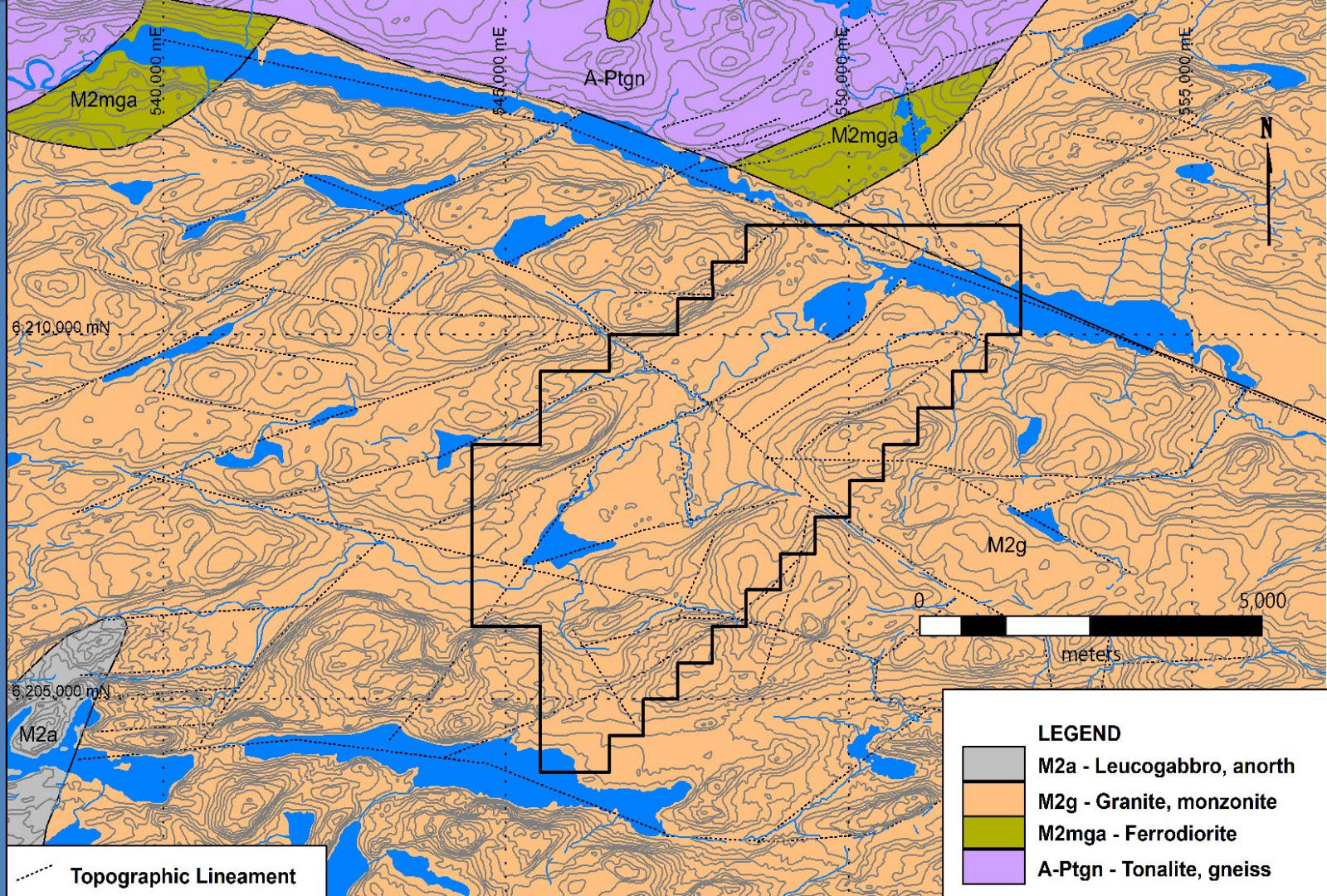
2 Licences (3,125 ha) – 60% owned by Rich Resources Inc.  
40% owned by Wolverine.  
Float plane and snowmobile accessible

# Regional Geology

Property in a similar geological setting as Voisey's Bay Mine.

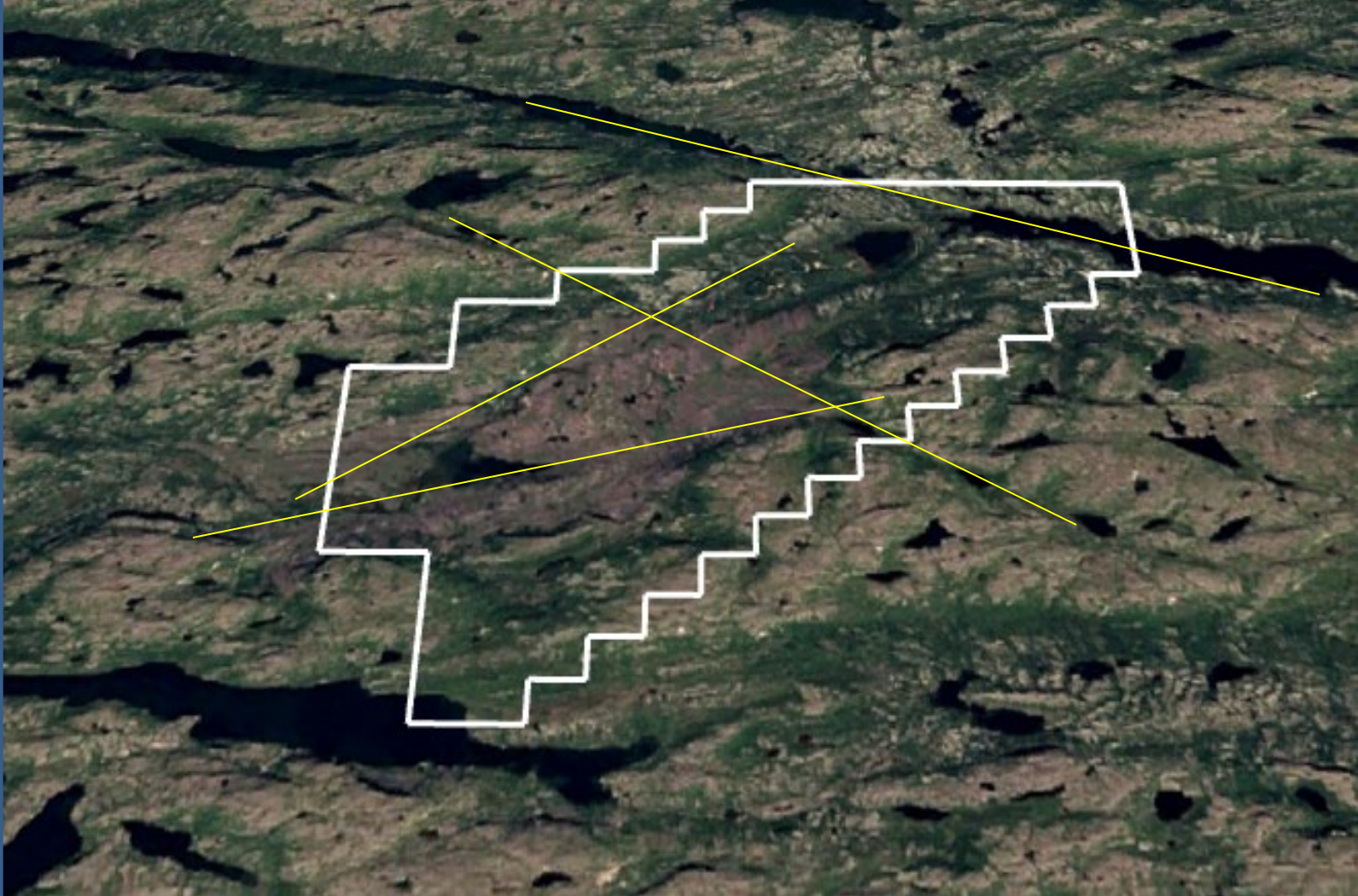


# Geology



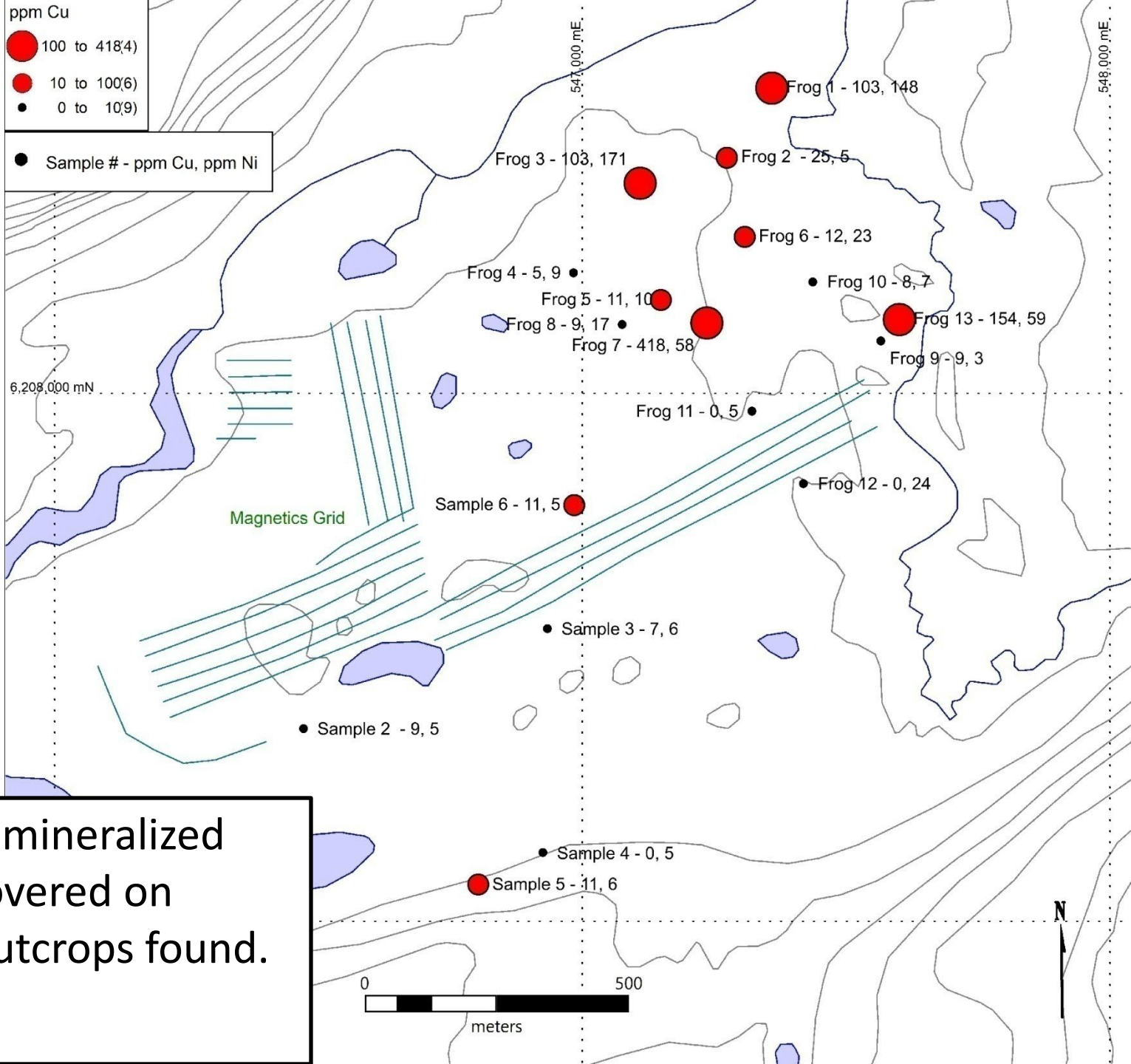
Property underlain by Churchill Province Granites

# Air Photo



Property underlain by multiple x-cutting structures.  
Fe discoloration evident in area of interest.

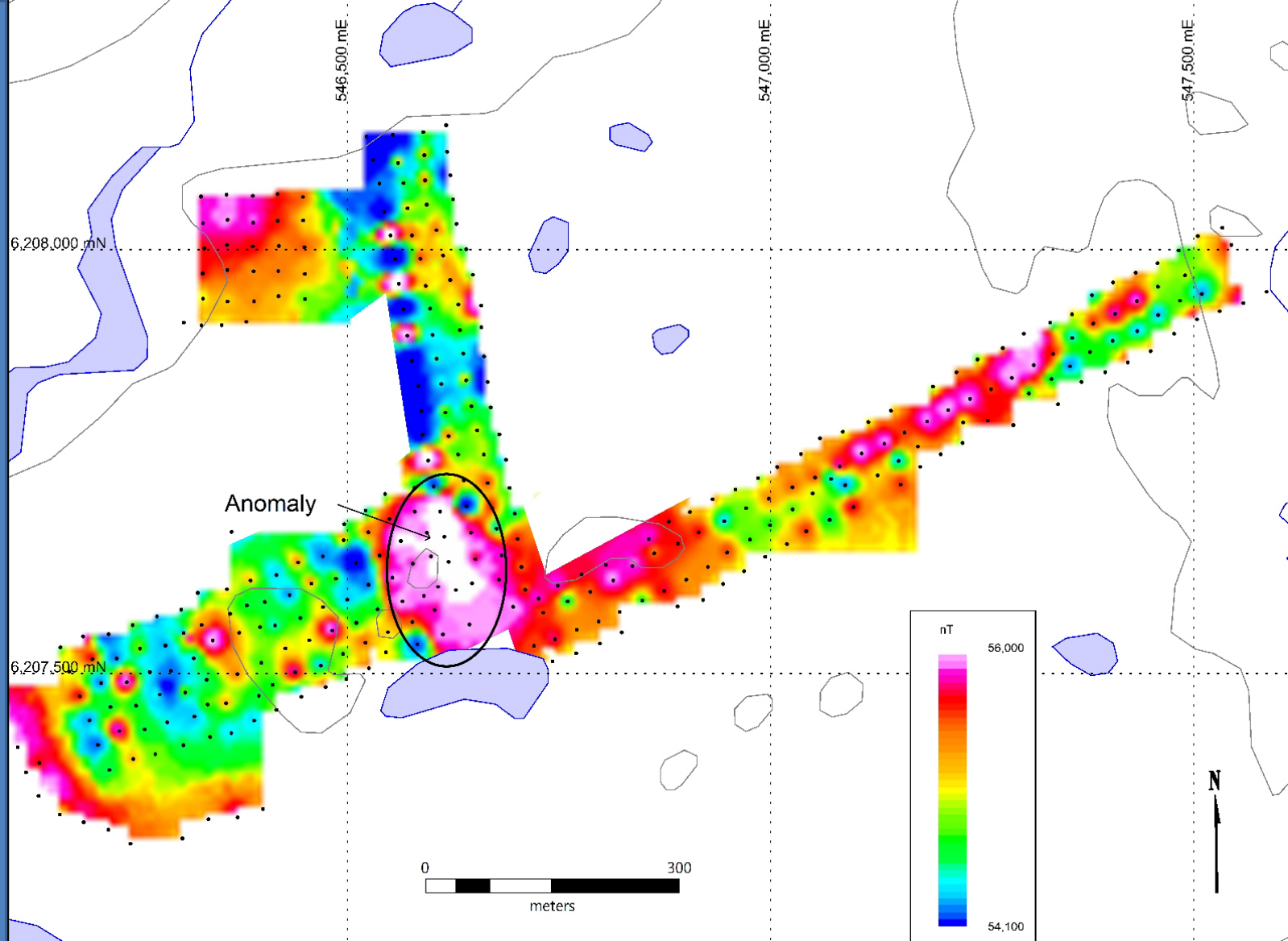
# 2021 Prospecting



Copper-nickel mineralized boulders discovered on surface. No outcrops found.

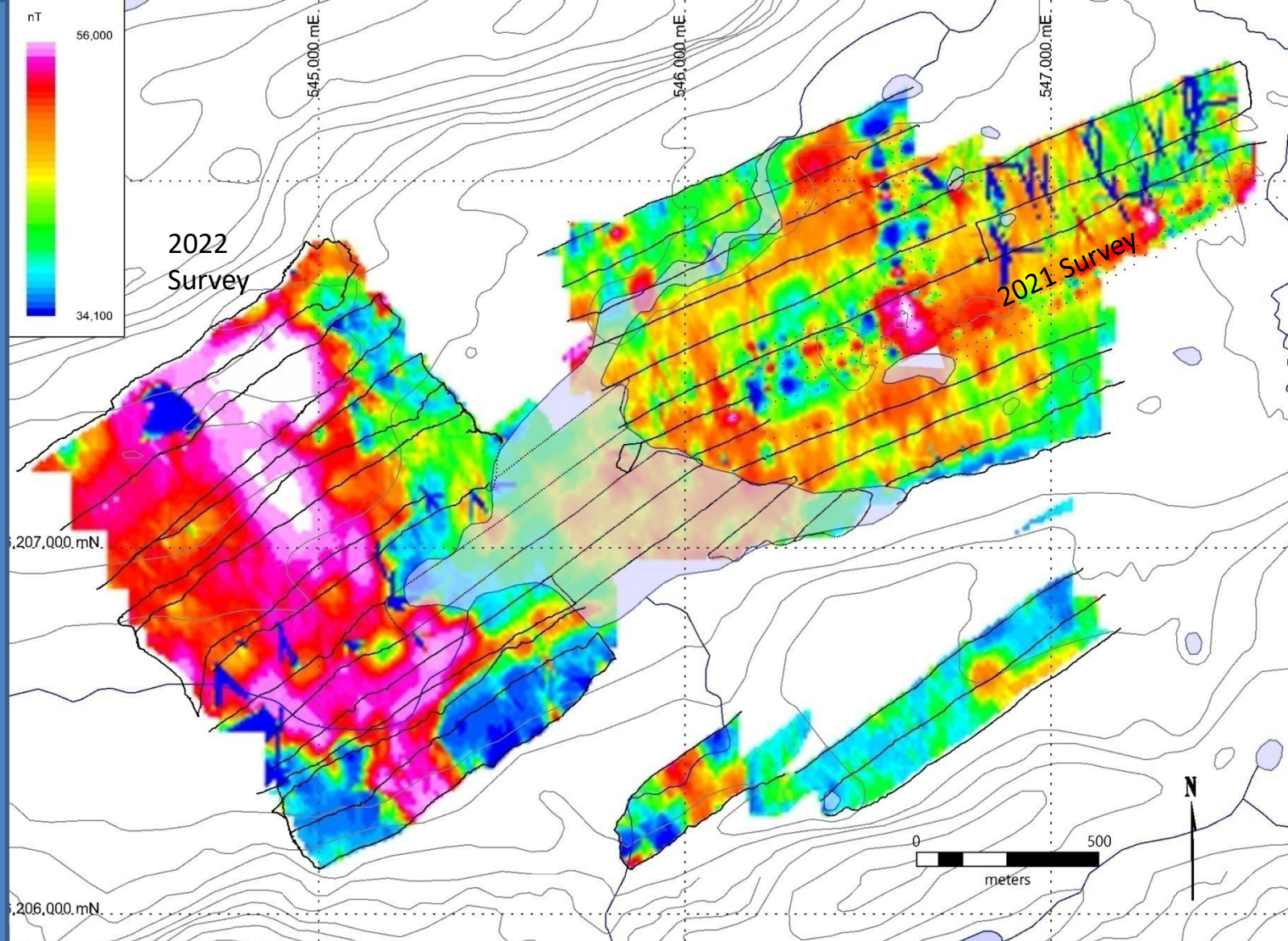


# 2021 Ground Magnetism



Several local anomalous areas outlined by survey.

# 2022 Follow-up Mag



Additional ground magnetics in 2022 delineated a strongly magnetic body extending across the valley over a 1.4 km strike, open to north and south.

# 2025 Plans and Budget

<b>Program</b>	<b>Description</b>	<b>Cost</b>
Airborne Radiometrics and Magnetics	Property Wide	\$65,000
Prospecting	Follow up on Radiometrics	\$50,000
Diamond Drilling	2000 Metres	\$800,000
Mob/Demob	Helicopter/Float Plane	\$250,000
Camp Costs		\$200,000
Contingencies	~ 10%	\$135,000
<b>Total</b>		<b>\$1,500,000</b>